

Light PACKAGING in PLASTIC, STEEL and ALUMINUM

Please, use designated yellow bags. Pick up is scheduled once a week in urban areas and every 14 days in rural areas. In apartment buildings with 11 or more housing units, all waste bags are to be placed in the designated wheeled container. Yellow bags and/or containers are to be placed in pick up area the evening before the scheduled pick up. After pick up, apartment buildings' containers are to be placed back in the private area, away from the public street. Any waste placed outside the designated yellow bag and/or container will not be collected.



PICK UP IN DESIGNATED YELLOW BAGS, PROVIDED BY AIMAG

PICK UP SCHEDULED ONCE EVERY 14 DAYS IN RURAL AREA

PICK UP SCHEDULED ONCE A WEEK IN URBAN AREA

ORGANIC

Please, use designated 25 lt bin. Pick up is scheduled twice a week in urban areas and once a week in rural areas. In apartment buildings with 6 or more housing units, all waste bags are to be placed in the designated building container. Containers are to be placed in pick up area the evening before the scheduled pick up. After pick up, apartment buildings' containers are to be placed back in the private area, away from the public street. Any waste placed outside of the designated bin or container will not be collected. AIMAG can provide compost container upon request. In case compost container is requested it will be provided to replace organic bin and a 30% reduction on pick up costs will be applied.



PICK UP SCHEDULED TWICE A WEEK IN URBAN AREA

PICK UP SCHEDULED ONCE EVERY 7 DAYS IN RURAL AREA

MOWINGS AND PRUNING

Pick up is organized through personal bags and containers or bundles. In urban areas, maximum 6 items at a time can be placed for pick up. In rural areas, maximum 2 items at a time. Containers are to be placed in pick up area the evening before the scheduled pick up and brought back in private area after pick up. **Please, stay within quantity and dimension limits for the pick up of mowings and pruning.**

RURAL AREA AND DOWNTOWN AREA
2 ITEMS, max 15 KG each:
BAGS with 100lt
CAPACITY BUNDLES max 120cm long and max diameter 40cm
BINS max 50X50X50 cm

URBAN AREA
6 ITEMS, MAX 20 KG each:
BAGS WITH 100lt
CAPACITY BUNDLES max 150cm long and max 40cm diameter
BINS MAX 85X85X85 cm3



PICK UP SCHEDULED EVERY 7 DAYS IN URBAN AND RURAL AREA

PAPER AND CARDBOARD

Please, use designated wheeled container. Pick up is scheduled every 14 days. In apartment buildings with 6 or more housing units, pick up is organized through designated building containers. Containers are to be placed in pick up area the evening before the scheduled pick up. After pick up, apartment buildings' containers are to be placed back in the private area, away from the public street. Any waste placed outside of the designated container will not be collected. No bags are accepted inside the paper and cardboard container.



PICK UP SCHEDULED ONCE EVERY 14 DAYS IN URBAN AND RURAL AREA

DO NOT USE BAGS INSIDE THE PAPER CONTAINER

GLASS

Please, use designated wheeled container. Pick up is scheduled every 28 days. In apartment buildings with 6 or more housing units, pick up is organized through designated building wheeled containers. Containers are to be placed in pick up area the evening before the scheduled pick up and brought back in private area after pick up. Any waste placed outside of the designated container will not be collected. No bags are accepted inside the glass container.



PICK UP SCHEDULED ONCE EVERY 28 DAYS IN URBAN AND RURAL AREA

DO NOT USE BAGS INSIDE THE PAPER CONTAINER

NON RECYCLING WASTE

Pick up is scheduled every 14 days. Please, use the wheeled container provided by AIMAG: it contains a microchip, which allows to precisely measure to emptying carried out- Containers are to be placed in pick up area the evening before the scheduled pick up and brought back in private area after pick up. Any waste placed outside of the designated container will not be collected.



PICK UP SCHEDULED ONCE EVERY 14 DAYS IN URBAN AND RURAL AREA

PLACE THE CONTAINER FOR PICK UP ONLY WHEN IT'S FULL!

CONTAINER FOR SANITARY AND PEDIATRIC WASTE

The container for sanitary and pediatric waste is designated for collecting diapers and other sanitary items. The container is provided upon request and it entices a dedicated service. The use of the sanitary waste container has a subsidized cost: 10% of the basic fee; therefore, every pick up results in a 90% discount. Pick up is scheduled every 7 days in urban area and every 14 days in rural area.



PICK UP SCHEDULED ONCE EVERY
14 DAYS IN RURAL AREA

PICK UP SCHEDULED ONCE A
WEEK IN URBAN AREA

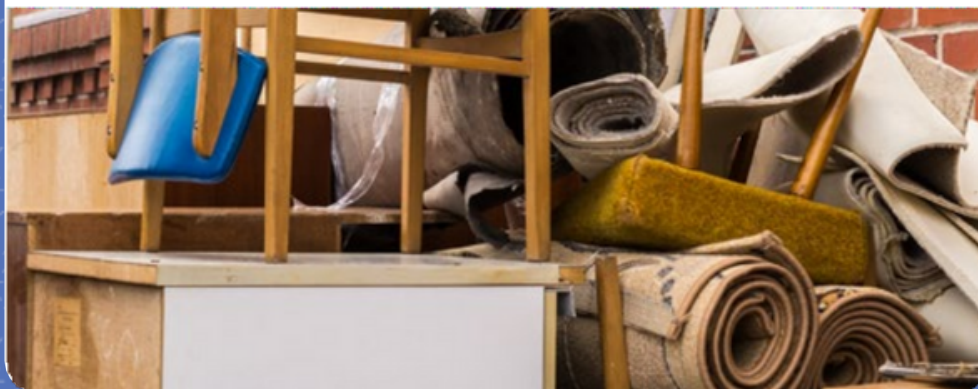
The necessary documents to request the sanitary container are:

Family doctor certification or delivery document of the public health company (ASL) for sanitary products.

- Social security card of the family member using sanitary products
- ID of the person collecting the container

BULK WASTE

You can call the designated number to book the pick up of bulk waste. The service is free up to 2 pick ups per year; each pick up can be booked for up to 4 items.



BAGS SUPPLY

Bio Bags with 10lt capacity for Organic Waste Yellow bags for light packaging (plastic, aluminum and steel)

Bag supplies can be collected at the “Ecosportello” or at the Waste Collection Centres, with social security number (Codice Fiscale) of the contract holder or with the latest waste bill.



Download the App MyAIMAG, to verify pick up schedules, notify a missed pick up, report littering, check the recycling encyclopedia or handle your accounts



WHERE SHOULD I THROW IT?

If you are unsure about where waste goes, check out the page www.aimag.it/rifiuti/dove-si-butta/ and see what waste goes in the different bins.

THE SPOT-ON FEE

The spot-on fee is calculated putting together two factors: a standard fee and a variable fee. **The standards fee** is based on the number of people in the family and the area of residency; urban area, downtown and rural area.



N° OF PEOPLE IN THE FAMILY



PICK UP AREA

The variable fee is based on the **volume of non recyclable waste that is picked up** in the period of time the bill refers to. It is measured with the number of pick ups of the waste in the designated container. The spot-on billing system for home waste has a minimum number of pick ups for the waste in the designated gray bin. The minimum number is calculated with the following system: number of people in the family + 1. For example, a family of three will pay for a minimum of 4 pick ups a year, a family of e people, will pay for 5. Every pick up in addition to the minimum number will be billed as single pick ups.



MINIMUM PICK UPS



REAL PICK UPS



Service number 800 018 405

From Monday to Friday 8 am-7 pm
Saturday 8 am-1 pm

aimag.it



THE “ECOSPORTELLI”

You can go to the AIMAG “Ecosportelli” to receive the supplies for the door to door waste pick up.

“Ecosportello” of Mirandola, Via Maestri del Lavoro 38; from Monday to Friday 8.00-12.45 and Saturday 8.15-12.00

“Ecosportello” of Carpi, Via Alghisi 19; from Monday to Friday 8.00-12.45 and Saturday 8.15-12.00



MUNICIPAL WASTE COLLECTION CENTRES

The waste collection centers are areas where you can bring your waste, which will then be treated and recuperated in designated specialized plants. In every Municipality where AIMAG handles waste services there is at least one collection center. To access it, the social security card of the contract holder is necessary. The Centre does not accept non recyclable waste or unsorted waste. In case of withdrawal from the contract, it is necessary to return the containers at the Collection Center. Visit the website aimag.it to find the address and opening hours of your municipal collection center.